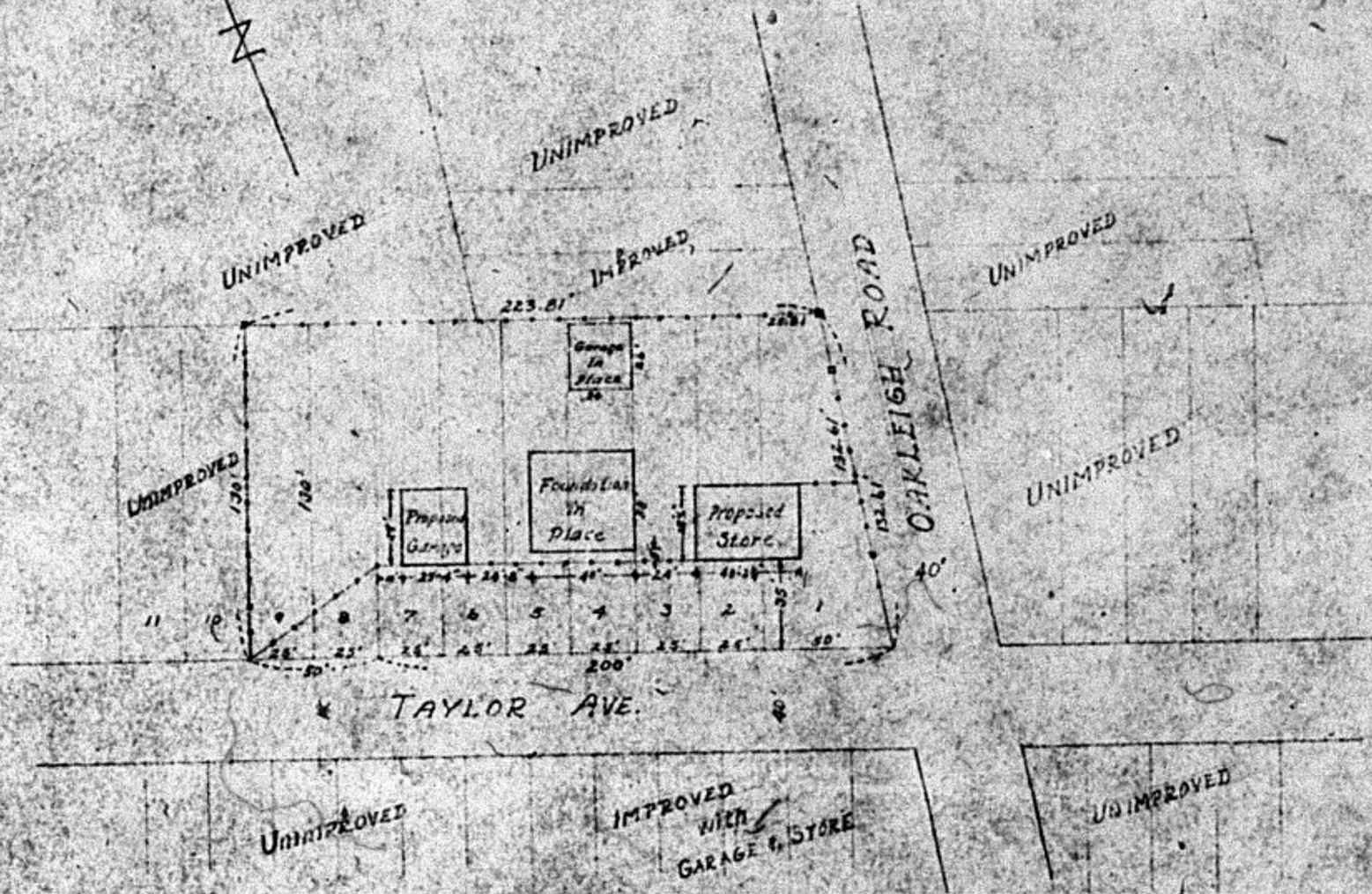


PROPOSED GARAGE & STORE FOR A.H. RAINS
ON LOTS 1 TO 7 INC. HILLENDALE PARK, BALTO, CO.

A.H. RAINS

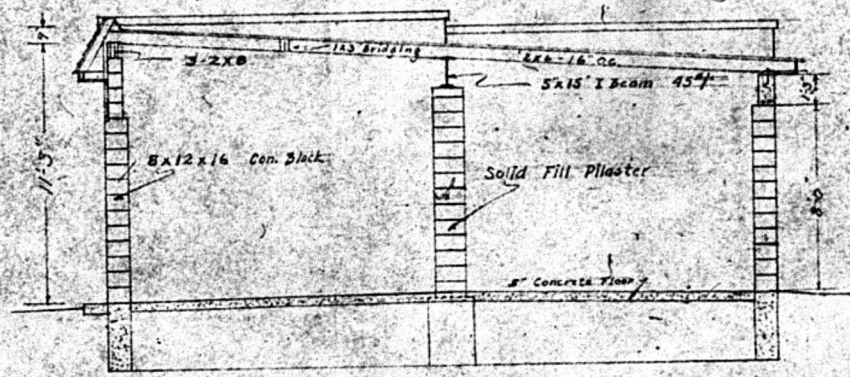
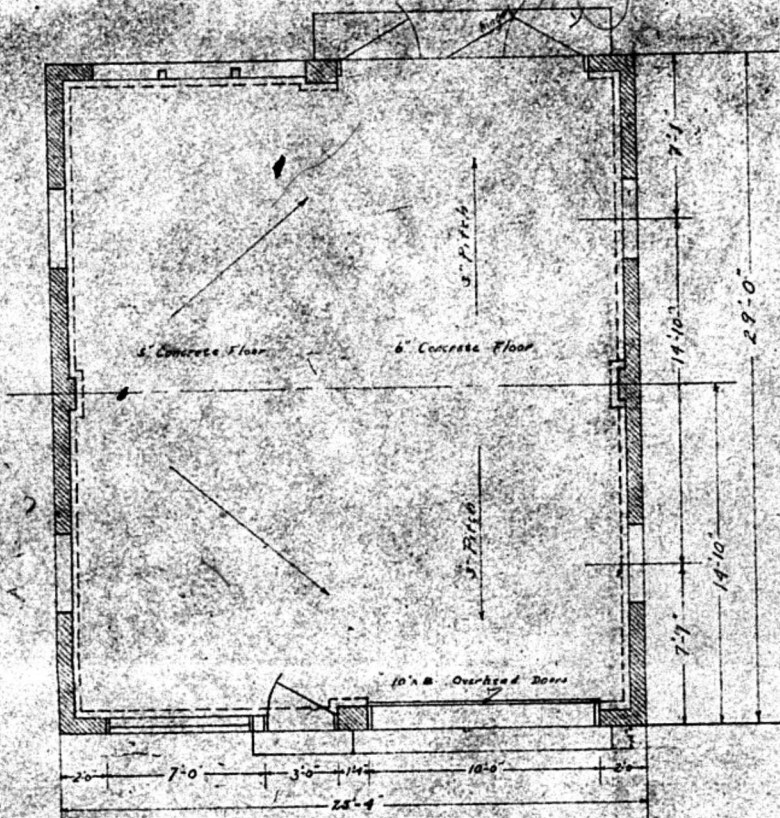
SCALE 1" = 50'

SEPT. 5, 1944.

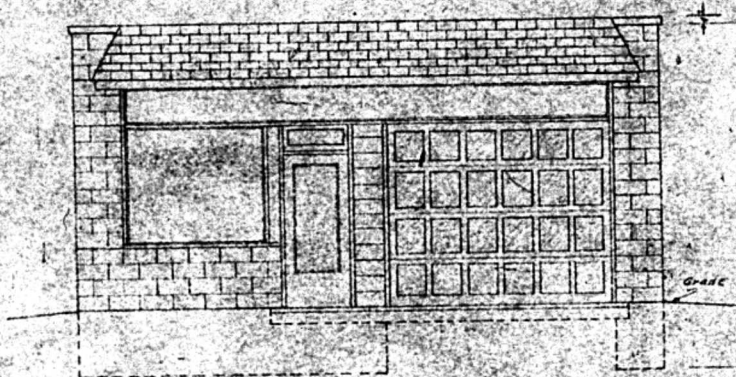


PROPOSED GARAGE FOR A. H. RAINS,
 TO BE BUILT ON LOTS # 6 & 7 ON THE
 PLAT OF HILLENDALE PARK, PLAT BOOK
 W.H.M. No. 9, FOLIO 10.

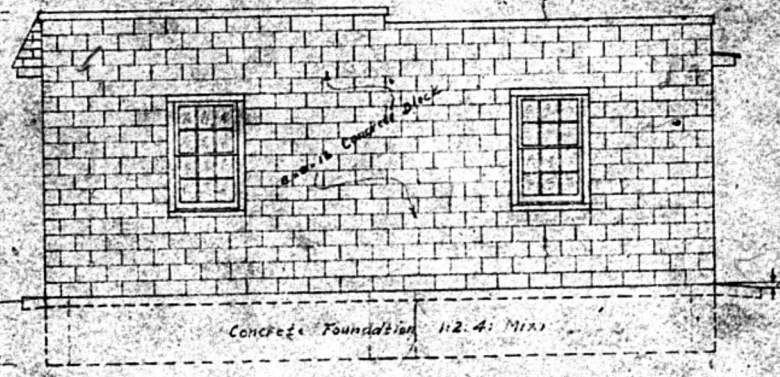
DRAWN BY - A. H. RAINS AUG. 17, 1944.



SECTION THRU CENTER



FRONT ELEVATION



EAST SIDE ELEVATION

