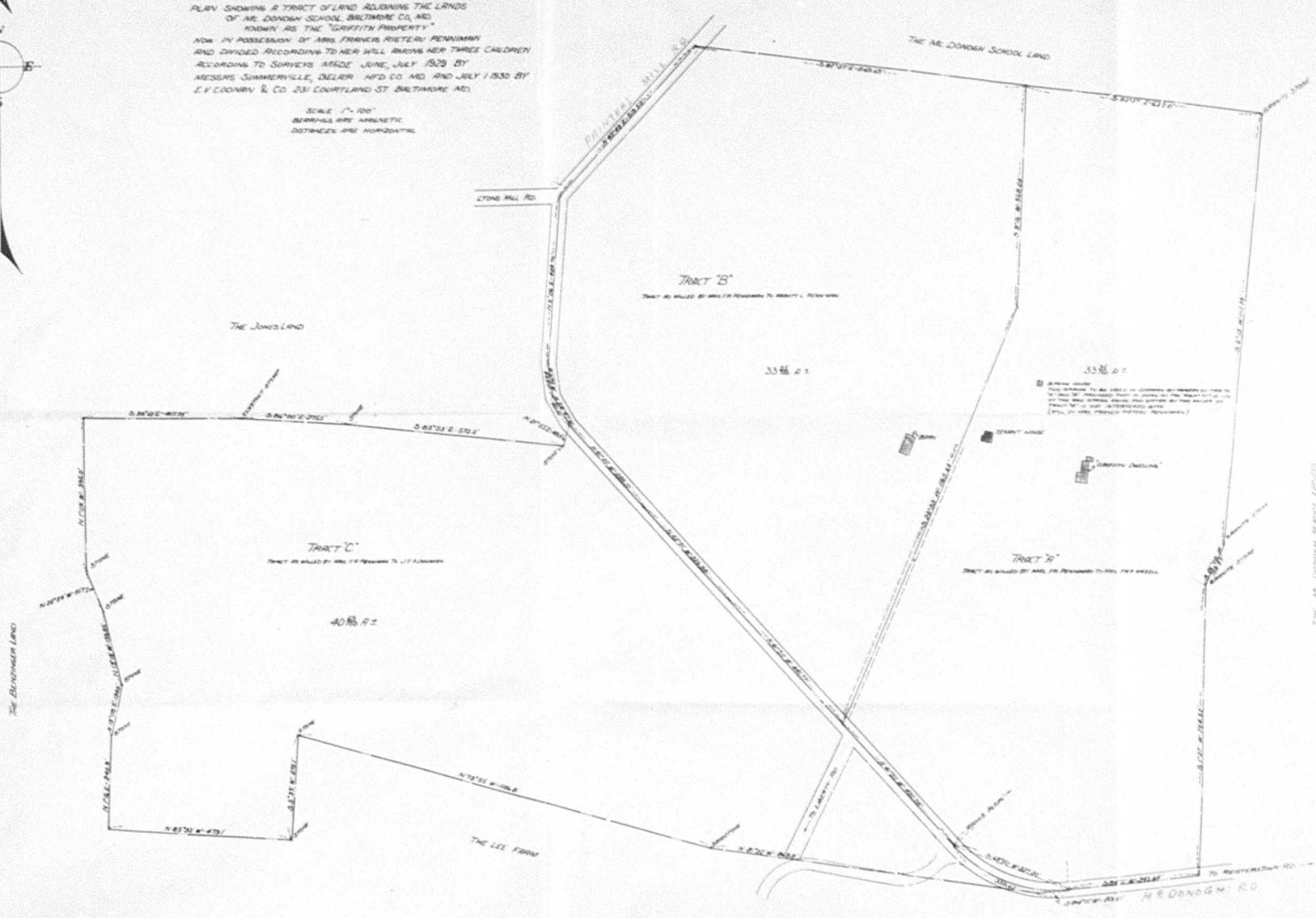


PLAN SHOWING A TRACT OF LAND ADJOINING THE LANDS
 OF MR. DONOH SCHOOL, BALTIMORE CO., MD.
 KNOWN AS THE "GRIFITH PROPERTY",
 NOW IN POSSESSION OF MISS FRANCES RHELENE PENNINGTON
 AND DIVIDED ACCORDING TO HER WILL AMONG HER THREE CHILDREN
 ACCORDING TO SURVEYS MADE JUNE, JULY, 1929 BY
 MESSRS. SUMMERSVILLE, DEALER, BALTO. CO. MD. AND JULY 1930 BY
 E. F. COONRY & CO. 231 COURTLAND ST. BALTIMORE, MD.

SCALE 1" = 100'
 BOUNDARIES ARE MAGNETIC
 DISTANCES ARE HORIZONTAL



THE MR. DONOH SCHOOL LANDS