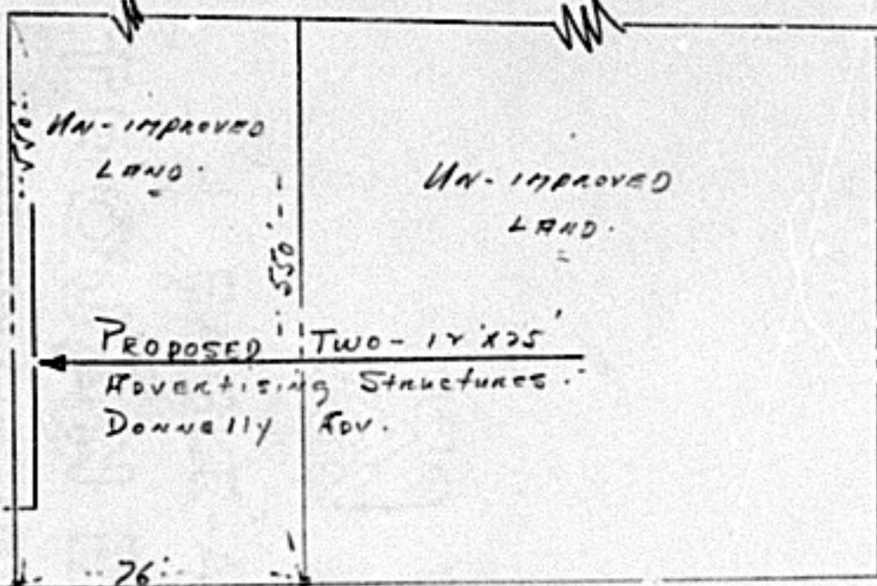


LAND USE MAP RELATING TO PETITION # 3981-X.

■ - COMMERCIAL USES

N

C.H. GREEN  
ORANGEVILLE  
TENN  
Keeis TV.



NEW  
Bldg.

MOBIL GAS  
STA.

1614

1616

Joppa

ROAD.

← PLEASANT PLAINS  
ROAD - 450ft.