

LOCATION MAP
SCALE: 1"=500'

NOTE:
Building Nos. Shown Thus
Group Nos. Shown Thus

GRADING STUDY
SECTION ONE
RIDGE GARDENS APARTMENTS
BALTIMORE COUNTY MARYLAND ELECTION DISTRICT NO. 9
SCALE: 1"=80'

MAY 8, 1964
ENGINEER
305 ALLEGHENY AVE.
TOWSON 4, MARYLAND

Revised 1-10
Revised 7-10
Revised 7-64
Revised 7-64

PLANS APPROVED
OFFICE OF PLANNING & ZONING
BY: *[Signature]*
DATE: *[Signature]*

144
3C
A

603
142

370

2

ZONED B-L
USE-COMMERCIAL

NATIONAL LEASING CORPORATION
3541 / 572
5.109 AC. ±

ZONED R-G
VACANT

RESERVED PARCEL
0.2 AC. ±

30.975 AC. ±

PUBLICLY OWNED

BOARD OF EDUCATION OF BALTO. CO.
4075 / 254
14.50 AC. ±

ZONED R-G
ZONED B-L
ZONED B-R
USE-COMMERCIAL

ZONED R-G
USE-RESIDENTIAL

ZONED R-G
USE-RESIDENTIAL

PLAT SHOWING
PART OF ALICE V. MILLER PROPERTY
TO ACCOMPANY CONTRACT OF SALE

BALTO. Co., Md. ELECT. DIST. N^o 3
SCALE: 1"=100' OCT. 29, 1963
REVISED-DEC. 20, 1968 (ZONING ADDED)

GEORGE WILLIAM STEPHENS, JR.
AND ASSOCIATES, INC.
ENGINEERS
803 ALLEGHENY AVE.
TOWSON 4, MARYLAND



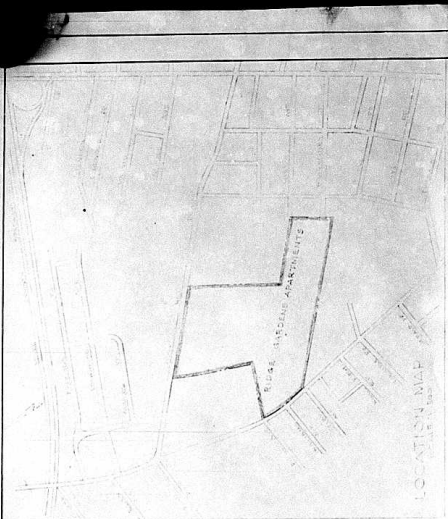
James A. Stephens, Jr.
12-10-68 2054

NOTE:
This plat was compiled from deeds and does not
constitute a field survey.

Approved Plan
Ridge Garden Apts
ZONING FILE # 64-37

Approved
2/26/65





BOARD OF EDUCATION OF BALTIMORE CO.
 PARKVILLE HIGH SCHOOL
 ATHLETIC FIELD
 4075-254

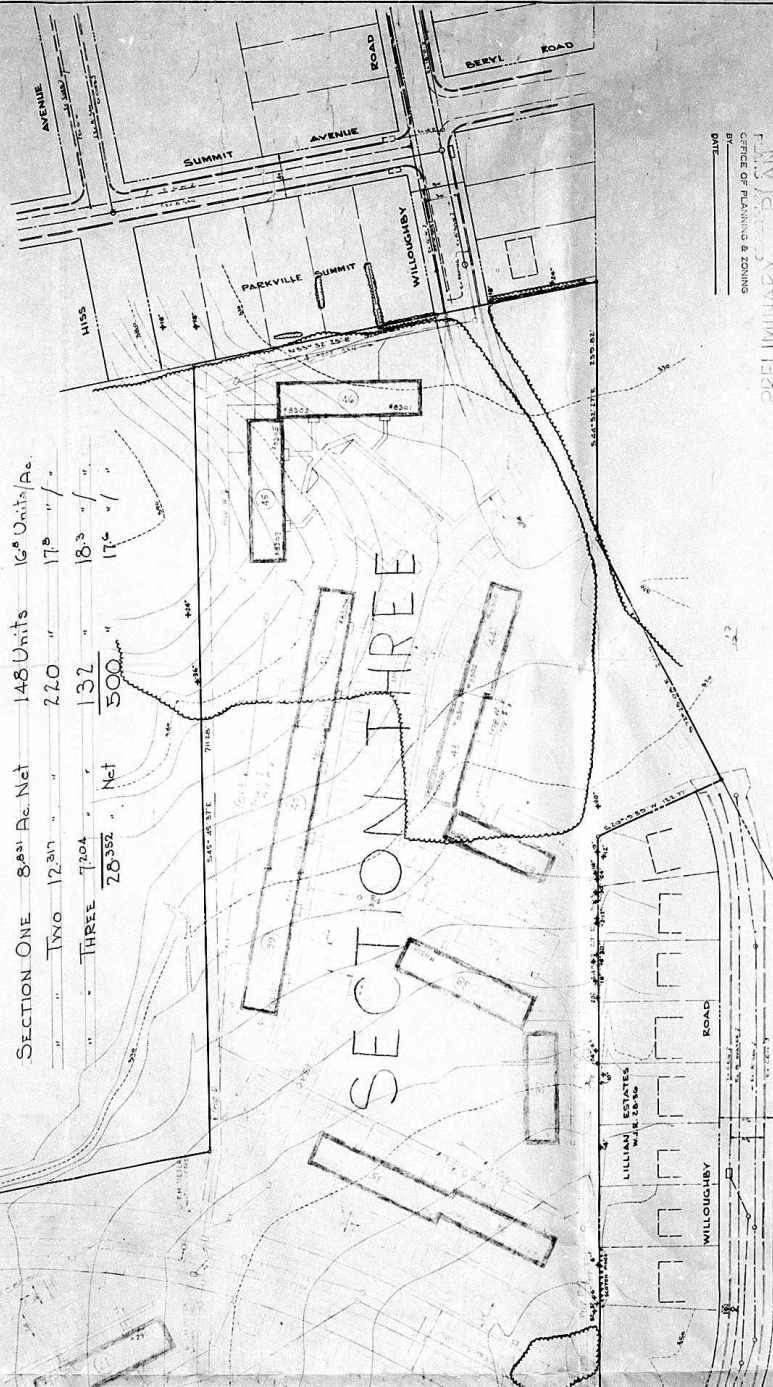
Net Area
 842.1
 25,175
 5,179
 5,179

Class 1 1/2
 Unit 17

UNIT AREA

1. UNIT AREA	25,175
2. TOTAL UNIT AREA	25,175
3. TOTAL UNIT AREA	25,175
4. TOTAL UNIT AREA	25,175
5. TOTAL UNIT AREA	25,175
6. TOTAL UNIT AREA	25,175
7. TOTAL UNIT AREA	25,175
8. TOTAL UNIT AREA	25,175
9. TOTAL UNIT AREA	25,175
10. TOTAL UNIT AREA	25,175

SECTION ONE	88 ¹ Ac. Net	148 Units	16 ⁰ Units/Ac.
"	TWO 12 ³ / ₄ "	220 "	17 ⁶ " / "
"	THREE 7 ² / ₄ "	132 "	18 ³ " / "
"	28 ³ / ₂ "	500 "	17 ⁶ " / "
	Net		



SECTION THREE

PRELIMINARY PLAN
 OFFICE OF PLANNING & ZONING
 BALTO. CO. MID. ELECT. DIST.
 SCALE: 1" = 50' APRIL 1924

PLANS APPROVED
 OFFICE OF PLANNING & ZONING
 BY: [Signature] DATE: 5/1/24