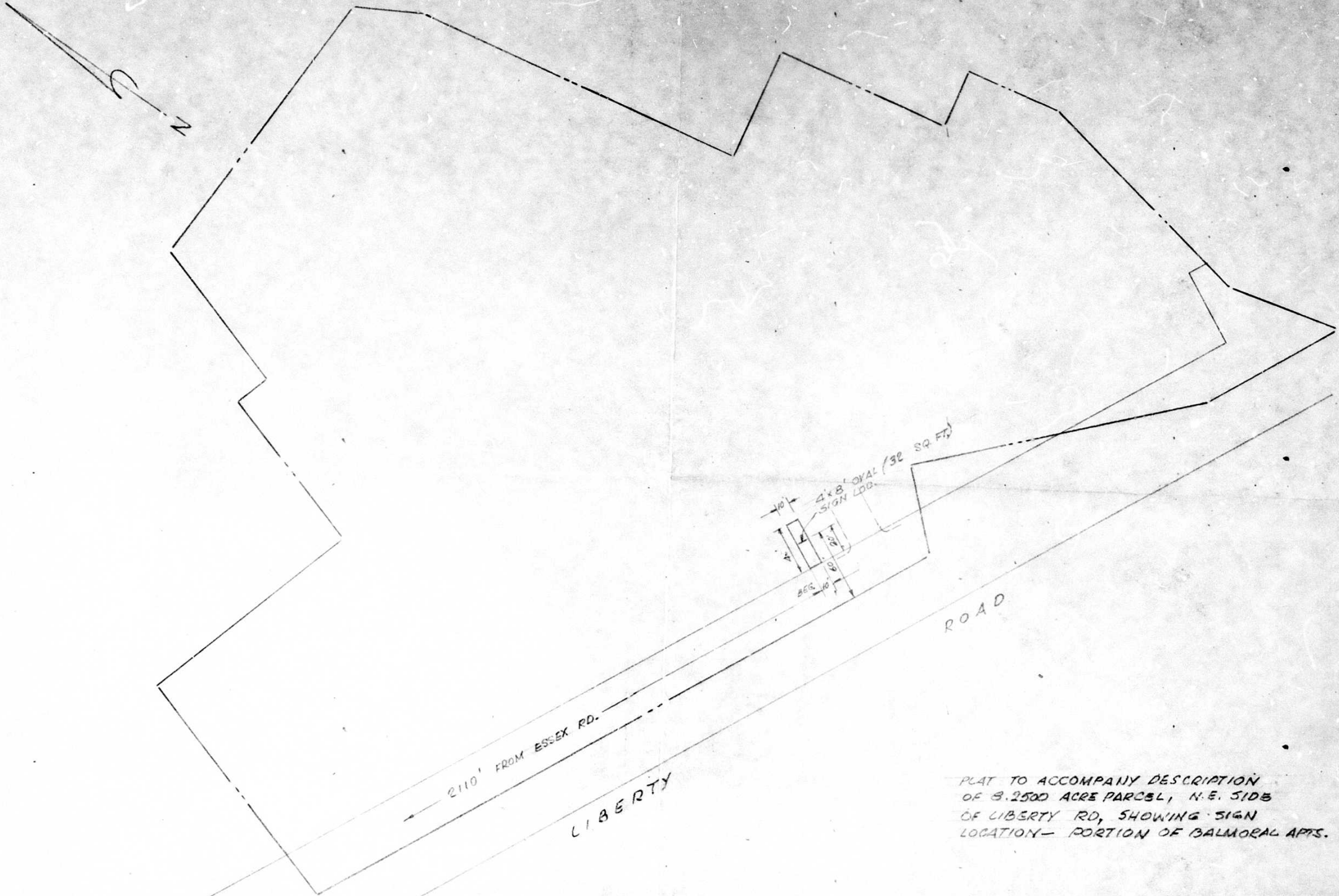


PLANS FOR ERECTING SIGN AT:
 SUB. BY: ART DISPLAY CO., 2315, 18th PL., N.E. - WASH. - D.C.



PLAT TO ACCOMPANY DESCRIPTION
 OF 8.2500 ACRE PARCEL, N.E. SIDE
 OF LIBERTY RD, SHOWING SIGN
 LOCATION - PORTION OF BALMORAL APTS.