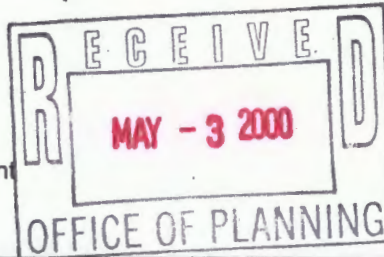


INTER-OFFICE CORRESPONDENCE
RECOMMENDATION FORM

5/18/00

TO: Director, Office of Planning & Community Conservation
Attention: Jeffrey Long
County Courts Building, Room 406
401 Bosley Avenue
Towson, MD 21204

Permit or Case No. N/A



Residential Processing Fee Paid (\$50.00)
Accepted by MJK
Date 5/1/00

FROM: Arnold Jablon, Director
Department of Permits & Development Management

RE: Undersized Lots

Pursuant to Section 304.2 (Baltimore County Zoning Regulations) effective June 25, 1992, this office is requesting recommendations and comments from the Office of Planning and Community Conservation prior to this office's approval of a dwelling permit.

MINIMUM APPLICANT SUPPLIED INFORMATION:

Ramcor Corp. 7090 Golden Ring Rd., Suite 107A (21237) 410-682-5
Print Name of Applicant 4125 Address Telephone Number
Lot Address 13A Beachwood Rd. Election District 15 Councilmanic District 7 Square Feet 6250
Lot Location: N ESW side/corner of Beachwood Rd. 500 feet from N E SW corner of Lynhurst Rd.
(street) (street)
Land Owner: Tania L. Cline Tax Account Number 15-05-710021
Address: 706 Greenwood Rd. Baltimore (21208) Telephone Number (410) 388-0589

CHECKLIST OF MATERIALS-. (to be submitted for design review by the Office of Planning and Community Conservation)

	TO BE FILLED IN BY ZONING REVIEW, DEPARTMENT OF PERMITS AND DEVELOPMENT MANAGEMENT ONLY! PROVIDED?	
	YES	NO
1. This Recommendation Form (3 copies)	<input checked="" type="checkbox"/>	<input type="checkbox"/>
2. Permit Application	<u>N/A</u>	<input type="checkbox"/>
3. Site Plan Property (3 copies)	<input checked="" type="checkbox"/>	<input type="checkbox"/>
Topo Map (2 copies): available in Room 206, County Office Building - (please label site clearly)	<input checked="" type="checkbox"/>	<input type="checkbox"/>
4. Building Elevation Drawings	<input checked="" type="checkbox"/>	<input type="checkbox"/>
5. Photographs (please label all photos clearly) Adjoining Buildings	<input checked="" type="checkbox"/>	<input type="checkbox"/>
Surrounding Neighborhood	<input checked="" type="checkbox"/>	<input type="checkbox"/>
6. Current Zoning Classification: <u>DR5.5</u>		

TO BE FILLED IN BY THE OFFICE OF PLANNING ONLY!

RECOMMENDATIONS / COMMENTS:

Approval Disapproval Approval conditioned on required modifications of the application to conform with the following recommendations:

Signed by: Jeffrey W. Long
for the Director, Office of Planning and Community Conservation

Date: 5/15/00

Revised 2/25/9

SCHEDULED DATES, CERTIFICATE OF FILING AND POSTING FOR A
BUILDING PERMIT APPLICATION PURSUANT TO SECTION 304.2

Department of Permits and Development Management (PDM)
County Office Building
111 West Chesapeake Avenue
Towson, Maryland 21204

The application for your proposed Building Permit application has been reviewed and is accepted for filing by Mitch Kellman on 5/11/02 Date (A)
(name of planner)

A sign indicating the proposed building must be posted on the property for fifteen (15) days before a decision can be rendered. The cost of filing is \$50.00. This fee is subject to change. Confirm all current fees prior to filing the application.

In the absence of a request for public hearing during the 15-day posting period, a decision can be expected within approximately four weeks. However, if a valid demand is received by the closing date, then the decision shall only be rendered after the required public special hearing.

*SUGGESTED POSTING DATE 5/12/02 D (15 Days Before C)

DATE POSTED _____

HEARING REQUESTED? YES _____ NO _____ - DATE _____

CLOSING DAY (LAST DAY FOR HEARING DEMAND) 5/27/02 C (B-3 Work Days)

TENTATIVE DECISION DATE 6/1/02 B (A + 30 Days)

*Usually within 15 days of filing

CERTIFICATE OF POSTING

District: _____

Location of Property: _____

Posted by: _____ Date of Posting: _____
Signature

Number of Signs: _____

Plat to accompany Petition for Zoning Variance Special Hearing

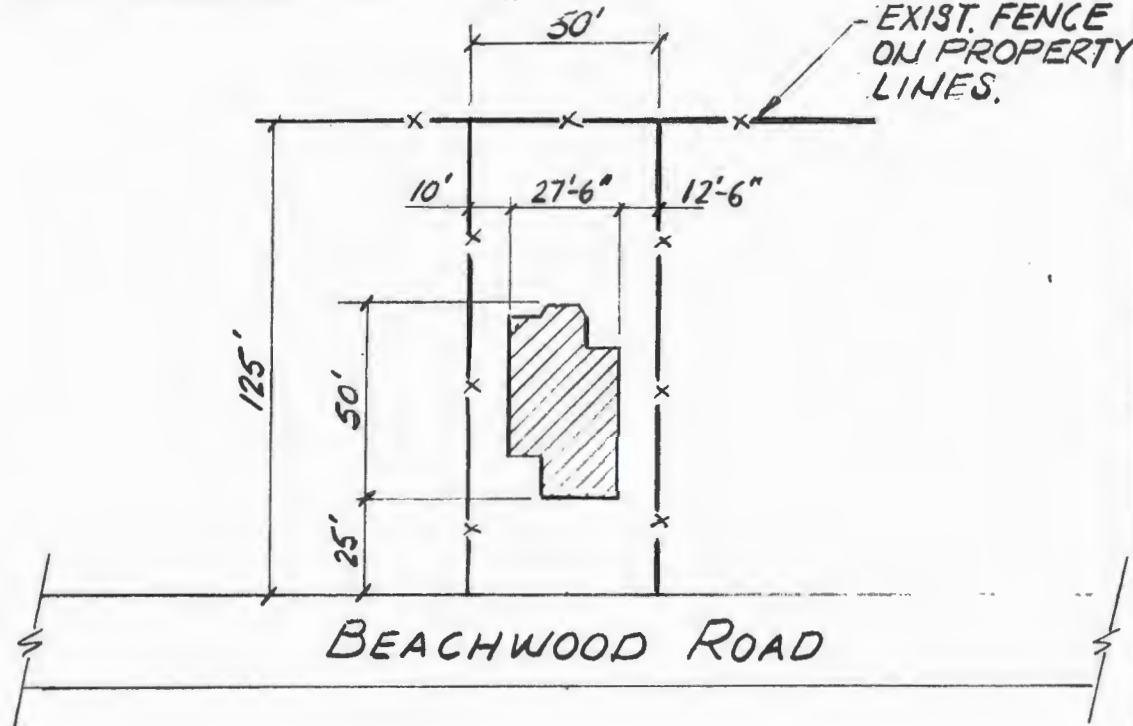
PROPERTY ADDRESS: BEACHWOOD ROAD

see pages 5 & 6 of the CHECKLIST for additional required information

Subdivision name: BEACHWOOD

plat book # 10, folio # 123, lot # 13A, section # _____

OWNER: TANIA L. CLINE



LOCATION INFORMATION

Election District: 15

Councilmanic District: 7

1"-200' scale map #: 10/123 BEACHWOOD

Zoning:

Lot size: .15 acreage 6250 square feet

SEWER: PUBLIC PRIVATE
 WATER: PUBLIC PRIVATE

Chesapeake Bay Critical Area: YES NO

Prior Zoning Hearings: N/A

Zoning Office USE ONLY!

reviewed by: _____ ITEM #: _____ CASE#: _____



North

date: 4-21-00

prepared by: G. WEIDERHOLD

Scale of Drawing: 1" = 50'

CERTIFICATE OF POSTING

**RE: CASE # Bldg. Permit
PETITIONER/DEVELOPER
(George Welderhold)
DATE OF Closing
(5-26-00)**

**BALTIMORE COUNTY DEPARTMENT OF
PERMITS AND DEVELOPMENT MANAGEMENT
COUNTY OFFICE BUILDING, ROOM 111
111 WEST CHESAPEAKE AVE.
TOWSON, MARYLAND 21204**

ATTENTION : MS. GWENDOLYN STEPHENS

LADIES AND GENTLEMEN:

**THIS LETTER IS TO CERTIFY UNDER THE PENALTIES OF PERJURY THAT THE NECESSARY
SIGNS(S) REQUIRED BY LAW WERE POSTED CONSPICUOUSLY ON THE PROPERTY LOCATED AT**

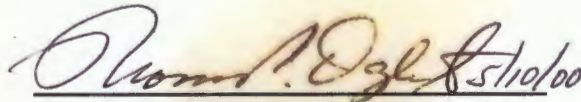
Posted on Beachwood Road Baltimore, Maryland 21222_____

THE SIGN(S) WERE POSTED ON _____

5-10-00 _____

(MONTH, DAY, YEAR)

SINCERELY,



(SIGNATURE OF SIGN POSTER & DATE)

**_____
THOMAS P. OGLE SR. _____**

**_____
325 NICHOLSON ROAD _____**

**_____
BALTIMORE, MARYLAND 21221 _____**

**_____
410-687-8405 _____**

(TELEPHONE NUMBER)

Posted on Beachwood Rd.



FRONT ELEVATION

Front View



1st Floor Plan

BEACHWOOD RD.



ZONE B

High Park

WALNUT GROVE

WALNUT POINT ROAD

WALNUT RD

ZONE B

ZONE B

ZONE B

ZONE B

ZONE B

ZONE B

ZONE B

ZONE B

ZONE B

ZONE B

ATLANTA

CONRAIL
FREEWAY

POINT

North Point

Battle

SITE

BLVD 19 (EL 91)

BLVD 20

BLVD 18

BLVD 16

BLVD 14

BLVD 12

BLVD 10

BLVD 8

BLVD 6

BLVD 4

BLVD 2

BLVD 0

BLVD -2

BLVD -4

BLVD -6

BLVD -8

BLVD -10

BLVD -12

BLVD -14

BLVD -16

BLVD -18

BLVD -20

BLVD -22

BLVD -24

BLVD -26

BLVD -28

BLVD -30

BLVD -32

BLVD -34

BLVD -36

BLVD -38

BLVD -40

BLVD -42

BLVD -44

BLVD -46

BLVD -48

BLVD -50

BLVD -52

BLVD -54

BLVD -56

BLVD -58

BLVD -60

BLVD -62

BLVD -64

BLVD -66

BLVD -68

BLVD -70

BLVD -72

BLVD -74

BLVD -76

BLVD -78

BLVD -80

BLVD -82

BLVD -84

BLVD -86

BLVD -88

BLVD -90

BLVD -92

BLVD -94

BLVD -96

BLVD -98

BLVD -100

BLVD -102

BLVD -104

BLVD -106

BLVD -108

BLVD -110

BLVD -112

BLVD -114

BLVD -116

BLVD -118

BLVD -120

BLVD -122

BLVD -124

BLVD -126

BLVD -128

BLVD -130

BLVD -132

BLVD -134

BLVD -136

BLVD -138

BLVD -140

BLVD -142

BLVD -144

BLVD -146

BLVD -148

BLVD -150

BLVD -152

BLVD -154

BLVD -156

BLVD -158

BLVD -160

BLVD -162

BLVD -164

BLVD -166

BLVD -168

BLVD -170

BLVD -172

BLVD -174

BLVD -176

BLVD -178

BLVD -180

BLVD -182

BLVD -184

BLVD -186

BLVD -188

BLVD -190

BLVD -192

BLVD -194

BLVD -196

BLVD -198

BLVD -200

BLVD -202

BLVD -204

BLVD -206

BLVD -208

BLVD -210

BLVD -212

BLVD -214

BLVD -216

BLVD -218

BLVD -220

BLVD -222

BLVD -224

BLVD -226

BLVD -228

BLVD -230

BLVD -232

BLVD -234

BLVD -236

BLVD -238

BLVD -240

BLVD -242

BLVD -244

BLVD -246

BLVD -248

BLVD -250

BLVD -252

BLVD -254

BLVD -256

BLVD -258

BLVD -260

BLVD -262

BLVD -264

BLVD -266

BLVD -268

BLVD -270

BLVD -272

BLVD -274

BLVD -276

BLVD -278

BLVD -280

BLVD -282

BLVD -284

BLVD -286

BLVD -288

BLVD -290

BLVD -292

BLVD -294

BLVD -296

BLVD -298

BLVD -300

BLVD -302

BLVD -304

BLVD -306

BLVD -308

BLVD -310

BLVD -312

BLVD -314

BLVD -316

BLVD -318

BLVD -320

BLVD -322

BLVD -324

BLVD -326

BLVD -328

BLVD -330

BLVD -332

BLVD -334

BLVD -336

BLVD -338

BLVD -340

BLVD -342

BLVD -344

BLVD -346

BLVD -348

BLVD -350

BLVD -352

BLVD -354

BLVD -356

BLVD -358

BLVD -360

BLVD -362

BLVD -364

BLVD -366

BLVD -368

BLVD -370

BLVD -372

BLVD -374

BLVD -376

BLVD -378

BLVD -380

BLVD -382

BLVD -384

BLVD -386

BLVD -388

BLVD -390

BLVD -392

BLVD -394

BLVD -396

BLVD -398

BLVD -400

BLVD -402

BLVD -404

BLVD -406

BLVD -408

BLVD -410

BLVD -412

BLVD -414

BLVD -416

BLVD -418

BLVD -420

BLVD -422

BLVD -424

BLVD -426

BLVD -428

BLVD -430

BLVD -432

BLVD -434

BLVD -436

BLVD -438

BLVD -440

BLVD -442

BLVD -444

BLVD -446

BLVD -448

BLVD -450

BLVD -452

BLVD -454

BLVD -456

BLVD -458

BLVD -460

BLVD -462

BLVD -464

BLVD -466

BLVD -468

BLVD -470

BLVD -472

BLVD -474

BLVD -476

BLVD -478

BLVD -480

BLVD -482

BLVD -484

BLVD -486

BLVD -488

BLVD -490

BLVD -492

BLVD -494

BLVD -496

BLVD -498

BLVD -500

BLVD -502

BLVD -504

BLVD -506

BLVD -508

BLVD -510

BLVD -512

BLVD -514

BLVD -516

BLVD -518

BLVD -520

BALTIMORE COUNTY, MARYLAND
OFFICE OF BUDGET & FINANCE
MISCELLANEOUS RECEIPT

No. 080498

DATE 5/1/00 ACCOUNT 001-6150

By: MMH AMOUNT \$ 50.00

RECEIVED FROM: Romcor Corp. Jay E. Winchold

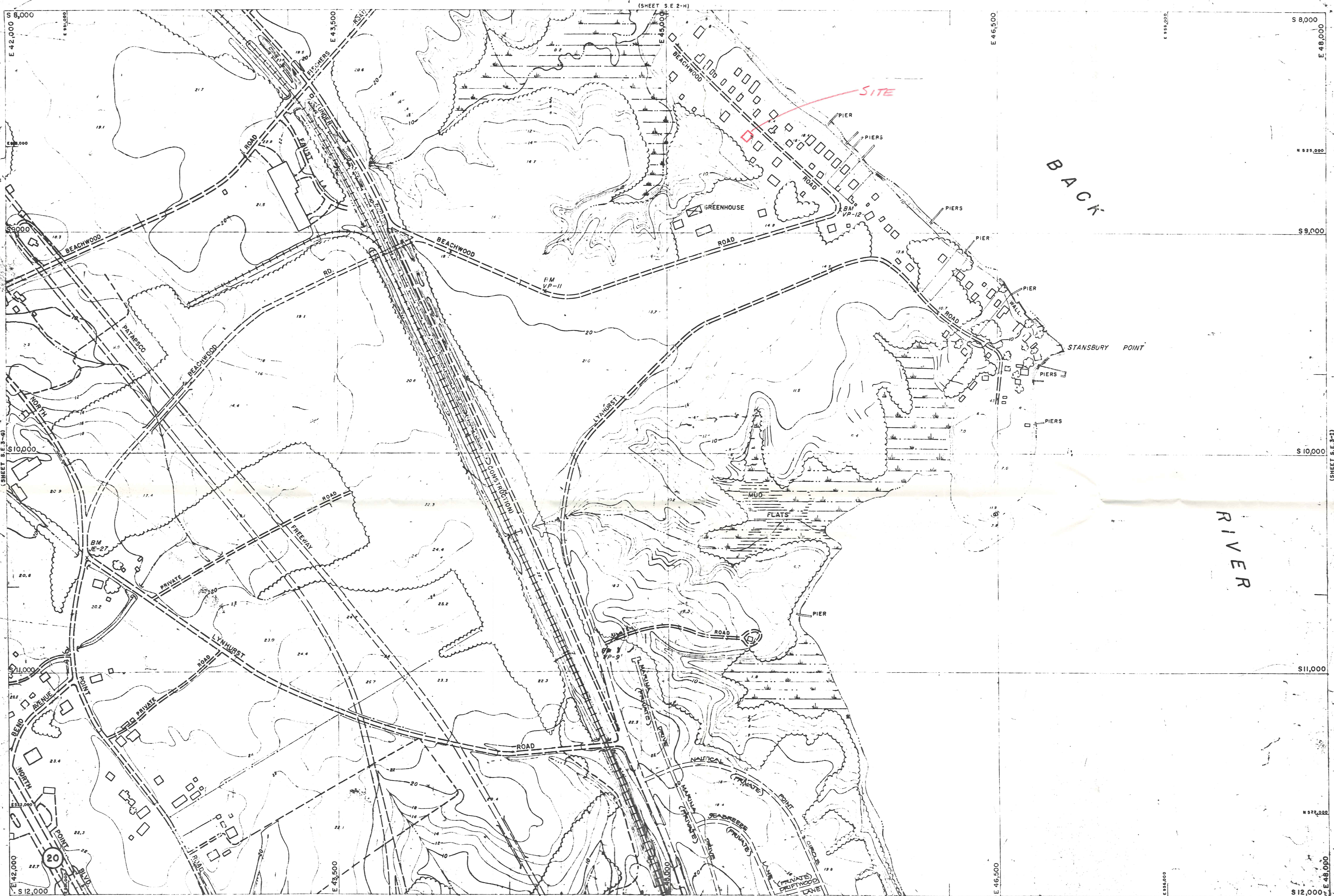
FOR: 030 - Undersize Lot Appeal

PAID RECEIPT

PAYMENT	ACTUAL	TIME
5/02/2000	5/01/2000	16:17:03
REG 4805	CASHIER	NOTE MES
Dept 5	520	ZONING VERIFICATION
Receipt #	004334	08
CR NO.	080498	
	Receipt Tot	50.00
	50.00	CK
		.00
	Baltimore County, Maryland	

DISTRIBUTION
WHITE - CASHIER PINK - AGENCY YELLOW - CUSTOMER

CASHIER'S VALIDATION



E-NW E-NE
E-SW E-SE

PHOTOGRAMMETRIC MAP OF BALTIMORE COUNTY METROPOLITAN AREA

REVISIONS	
BY	DATE

SCALE
1" = 200'

DATE OF PHOTOGRAPHY
DEC. 1954

LOCATION
NORTH POINT

SHEET
S E
3 H

Topography Compiled By Photogrammetric Methods
ABRAMS AERIAL SURVEY CORP. LANING, MICH.