

BCDC BOSLEY GENERATOR REPLACEMENT 720 BOSLEY AVE.

100% CONSTRUCTION DRAWINGS
DATE: JANUARY 29, 2026

BALTIMORE COUNTY PROPERTY MANAGEMENT

12200 A Long Green Pike
Glen Arm, Maryland 21054

MECHANICAL & ELECTRICAL ENGINEERS BOWMAN


300 East Joppa Road, Suite 501
Towson, Maryland 21286

DRAWING INDEX

2026-0082 T-001 TITLE SHEET

ELECTRICAL:

2026-0083 E-001 ELECTRICAL COVERSHEET
2026-0084 E-101 PARTIAL PLAN - ELECTRICAL - DEMOLITION
2026-0085 E-201 PARTIAL PLAN - ELECTRICAL - NEW WORK

	PROFESSIONAL CERTIFICATION		AS-BUILT / REVISION		BY	DATE	P.W.A. NO.	KEY SHEET	POSITION SH#	DRAWING SCALE	PROPERTY MANAGEMENT
	I HEREBY CERTIFY THAT THESE DOCUMENTS WERE PREPARED OR APPROVED BY ME, AND THAT I AM A DULY LICENSED PROFESSIONAL ENGINEER UNDER THE LAWS OF THE STATE OF MARYLAND.							QNW		PLAN SCALE: AS SHOWN	APPROVED BY: <i>JM Doran</i>
	LICENSE NO. 51827 EXPIRATION DATE 12/06/26		CONTRACT COMPLETION BOX							PROFILE SCALE:	DATE: 1/30/2026
	ENGINEER: Dalton J. Twardus	DGN BY:	BUREAU OF ENGINEERING AND CONSTRUCTION	TRAFFIC	HIGHWAYS	STRUCTURES	STORM DRAINS	SEWER	WATER	FIELD ENGINEER	
AS-BUILT PER RECORD PRINT	DWN BY:	REVIEWED BY:									
BY: _____	CHKD BY: _____	DATE REVIEWED:									
DATE: 01/29/2026											

BALTIMORE COUNTY OFFICE OF BUDGET AND FINANCE - PROPERTY MANAGEMENT
BCDC BOSLEY GENERATOR REPLACEMENT
TITLE SHEET
Replacement of 1.5 MW Generator
SUBDIVISION: TOWSON
720 BOSLEY AVENUE, TOWSON, MD 21204
ELECTION DIST. NO. 15C7

SHEET DESIGNATION	CONTRACT NUMBER
T-001	DPW#25215 PO0
	JOB ORDER NUMBER
	10001234
	SHEET 1 OF 4
	DRAWING NUMBER
	2026-0082
	FILE NO.: 8



DWG. FILENAME:

ELECTRICAL LEGEND	
SYMBOL	DESCRIPTION
(#)	DRAWING NOTE
[Thin Line]	EXISTING OR FUTURE EQUIPMENT, AS NOTED THIN/SOLID
[Dashed Line]	EXISTING EQUIPMENT TO BE REMOVED, HEAVY/DASHED
[Thick Line]	NEW EQUIPMENT, AS NOTED HEAVY/SOLID
6-30R	SPECIAL RECEPTACLE; NEMA TYPE AS NOTED. M.H. 18" UNLESS NOTED
[Hatched Box]	DISTRIBUTION PANELBOARD
[Hatched Box]	BRANCH CIRCUIT PANELBOARD; SURFACE MOUNTED, FLUSH MOUNTED
[Switch Symbols]	DISCONNECT SWITCH - 3P-30A UNLESS OTHERWISE NOTED; FUSED, NON-FUSED
[Motor Symbol]	MAGNETIC MOTOR STARTER; COMBINATION STARTER/DISCONNECT
[Switch Symbol]	THERMAL MANUAL MOTOR STARTER SWITCH
[Transformer Symbol]	TRANSFORMER (INTERIOR)
[Motor Symbol]	MOTOR - HP AS NOTED
[Conduit Symbols]	CONDUIT OR CONDUIT AND WIRE ROUTED IN GRADE OR BELOW SLAB
[Conduit Symbols]	CONDUIT AND WIRE OR CABLE ROUTED WITHIN WALLS OR CEILING SPACE OR ROUTED EXPOSED ON WALLS OR CEILINGS. CROSSLINES INDICATE THE NUMBER OF CONDUCTORS IF MORE THAN TWO (NOT INCLUDING GROUND)
[Conduit Symbols]	HOMERUN TO PANELBOARD. NUMBER OF ARROWS INDICATES THE NUMBER OF CIRCUITS
[Conduit Symbols]	CONDUIT ENTRANCE FROM ABOVE, FROM BELOW

GENERAL PROJECT DEMOLITION NOTES	
1.	INFORMATION SHOWN ON THIS DRAWING PERTAINING TO EXISTING CONDITIONS HAS BEEN OBTAINED FROM EXISTING DRAWINGS OR GENERAL FIELD OBSERVATIONS AND MAY NOT INDICATE ACTUAL EXISTING CONDITIONS IN DETAIL OR DIMENSION. CONTRACTOR IS RESPONSIBLE FOR DETERMINING THE ACTUAL CONDITIONS AND EFFECT ON HIS WORK PRIOR TO FABRICATION, ROUGHIN, MATERIAL ORDERS OR PERFORMANCE OF THE WORK. SHOULD CONDITIONS BE DISCOVERED THAT PREVENT EXECUTION OF THE WORK AS INDICATED, IMMEDIATELY NOTIFY THE ARCHITECT IN WRITING FOR DIRECTION BEFORE PROCEEDING WITH THE WORK.
2.	REMOVE ALL EQUIPMENT INDICATED, INCLUSIVE OF ASSOCIATED CONDUIT, WIRING, BOXES, SUPPORTS, ETC. BACK TO SOURCE OR LAST REMAINING DEVICE ON SAME CIRCUIT, UNLESS NOTED OTHERWISE.
3.	EXISTING CIRCUITS INTERRUPTED BY DEMOLITION OR RELOCATION WORK, BUT SERVING ITEMS INDICATED TO REMAIN, SHALL BE MADE CONTINUOUS.
4.	DEMOLITION SHALL INCLUDE REMOVAL OF ELECTRICAL EQUIPMENT AND ASSOCIATED COMPONENTS AND MATERIALS. DO NOT ABANDON IN PLACE ANY ITEMS UNLESS NOTED ON THE DRAWINGS. EQUIPMENT REMOVED SHALL BE OFFERED TO THE OWNER PRIOR TO DISPOSAL, AND IF DESIRED, SHALL BE STORED ON SITE, WHERE INSTRUCTED. ALL MATERIALS NOT TO BE RETAINED BY OWNER SHALL BE REMOVED FOR OFF-SITE, LEGAL DISPOSAL.
5.	UNLESS NOTED OTHERWISE, ELECTRICAL ITEMS SHOWN HEAVY/DASHED (- - - - -) SHALL BE REMOVED AND/OR RELOCATED. ELECTRICAL ITEMS SHOWN LIGHT/SOLID (_____) ARE EXISTING TO REMAIN. ELECTRICAL ITEMS SHOWN HEAVY/SOLID (_____) REPRESENTS NEW WORK.
6.	THE EXISTING FACILITY SHALL REMAIN IN OPERATION DURING CONSTRUCTION. ALL INTERRUPTIONS TO UTILITIES OR SERVICES MUST BE COORDINATED WITH THE OWNER OR USING AGENCY TO MINIMIZE DISRUPTIONS. PROVIDE NOTICE TO THE FACILITY AND OWNER 15 DAYS IN ADVANCE OF PLANNED OUTAGES.
7.	NOTIFY OWNER OF ANY DAMAGED OR NON-WORKING ITEMS PRIOR TO REMOVAL. ANY EQUIPMENT DAMAGED DURING REMOVAL AND/OR RELOCATION SHALL BE REPLACED AT THE CONTRACTOR'S EXPENSE WITH EQUIPMENT EQUAL TO EXISTING.
8.	ANY OPENINGS LEFT IN CEILINGS/WALLS SHALL BE PATCHED AND FINISHED TO MATCH EXISTING ADJACENT SURFACES. WHERE DEVICES ARE REMOVED FROM CEILING TILES, PROVIDE REPLACEMENT TILE(S) TO MATCH EXISTING.
9.	DISCONNECT AND REMOVE ALL ASSOCIATED ELECTRICAL CONNECTIONS FOR EXISTING FUEL SYSTEM PLUMBING EQUIPMENT BEING REMOVED, INCLUDING: CONDUIT, WIRING, OUTLETS, DISCONNECTING MEANS, STARTERS, SWITCHES, ETC.

GENERAL PROJECT NOTES	
1.	DRAWINGS ARE DIAGRAMMATIC AND GENERALLY REPRESENTATIVE OF THE WORK REQUIRED. VERIFY ALL WORK ON SITE AND REPORT ANY CONFLICTS TO THE ENGINEER FOR REVIEW PRIOR TO PROCEEDING WITH WORK OR CHANGES.
2.	PROVIDE NEW TYPED CIRCUIT DIRECTORIES FOR ALL NEW PANELBOARDS AND ANY EXISTING PANELS IN WHICH CIRCUITS WERE MODIFIED.
3.	ALL PANELBOARD AND SWITCHBOARD CONNECTIONS ARE BASED ON COPPER CONDUCTORS. WHERE ALUMINUM CONDUCTORS ARE PERMITTED BY SPECIFICATIONS, CONTRACTOR SHALL ADJUST CONDUCTOR AND CONDUIT SIZES TO MAINTAIN SAME AMPACITY RATINGS AS THE SPECIFIED COPPER CONDUCTORS PER 75 DEGREE COLUMN IN NEC TABLES.
4.	ALL CONDUIT, BOXES, CABLE TRAY, ETC. SHALL GENERALLY BE INSTALLED A MINIMUM OF 12" ABOVE CEILINGS. COORDINATE WITH OTHER TRADES PRIOR TO INSTALLATION.
5.	ALL PROJECT CONDUIT AND CABLING SHALL BE INSTALLED ABOVE FINISHED CEILINGS, WHERE POSSIBLE TO MINIMIZE VISIBILITY OF SUCH ITEMS IN AREAS WITH EXPOSED STRUCTURE. ALL CABLING INSTALLED IN EXPOSED STRUCTURE AREAS, SHALL BE IN EMT CONDUIT INSTALLED TIGHT TO DECK ABOVE, EXCEPT FOR SHORT FINAL CONNECTIONS TO FIRE ALARM DEVICES, LIGHT FIXTURES, ETC. MC CABLE SHALL BE PERMITTED WHERE INSTALLED ABOVE FINISHED CEILINGS OR CONCEALED IN PARTITION WALLS.
6.	MAKE MINOR ADJUSTMENTS TO LIGHT FIXTURE LOCATIONS AND/OR ELEVATIONS IN GENERATOR ENCLOSURE, TO COORDINATE WITH FINAL INSTALLED PIPING, CONDUITS, AND LARGE EQUIPMENT. DO NOT INSTALL LIGHTS ABOVE PIPING OR EQUIPMENT.
7.	ALL BRANCH CIRCUITS SHALL UTILIZE INDIVIDUAL NEUTRAL CONDUCTORS. SHARED NEUTRALS AND MULTI-WIRE CIRCUITS ARE NOT PERMITTED.
8.	ALL BRANCH CIRCUITS AND FEEDERS SHALL INCLUDE AN EQUIPMENT GROUNDING CONDUCTOR. CONDUIT IS NOT PERMITTED AS THE SOLE GROUND PATH.
9.	THIS PROJECT REQUIRES SPECIFIC SEISMIC SWAY BRACING AND SUPPORTING OF SELECTED EQUIPMENT AND SYSTEMS. REFER TO SPEC SECTION 16071 (26 05 48).
10.	UNLESS LARGER GAUGE IS INDICATED ON PANEL SCHEDULES, BRANCH CIRCUIT WIRING SHALL COMPENSATE FOR VOLTAGE DROP, AS FOLLOWS: a. 120V, 0-90LF: #12AWG 277V, 0-150LF: #12 AWG b. 120V, 91-140LF: #10 AWG 277V, 151-240LF: #10 AWG c. 120V, >140LF: #8 AWG 277V, >240LF: #8 AWG
15.	UNLESS NOTED OTHERWISE, ALL WIRING & CONDUIT/CABLING SHOWN ON FLOOR PLANS IS FOR DIAGRAMMATIC PURPOSES ONLY. COORDINATE EXACT INSTALLATION REQUIREMENTS WITH FIELD CONDITIONS AND INSTALL PER SPECIFICATIONS.
16.	MINIMUM INTERIOR RIGID CONDUIT SIZE SHALL BE 3/4" UNLESS NOTED OTHERWISE.
17.	CONTRACTOR TO SUBMIT BALTIMORE COUNTY DEPARTMENT OF CORRECTIONS SECURITY CLEARANCE APPLICATION WITH ALL PROJECT EMPLOYEES IDENTIFICATIONS PERFORMING WORK ON THIS PROJECT TO BALTIMORE COUNTY CORRECTIONS FOR VETTING OF WORKERS.
18.	ANY MAJOR SALLY PORT ACCESS SHALL OCCUR ON WEEKEND HOURS ONLY. COORDINATE AND SCHEDULE ALL ENTRIES THROUGH BALTIMORE COUNTY CORRECTIONS DIVISION AND FACILITIES MAINTENANCE.
19.	CONTRACTOR CONSTRUCTION HOURS SHALL BE BETWEEN 6:00AM AND 2:30PM. CONTRACTOR SHALL COORDINATE ALL ENTRY AND EXIT TIMES WITH BALTIMORE COUNTY CORRECTIONS DIVISION AND FACILITIES MAINTENANCE.

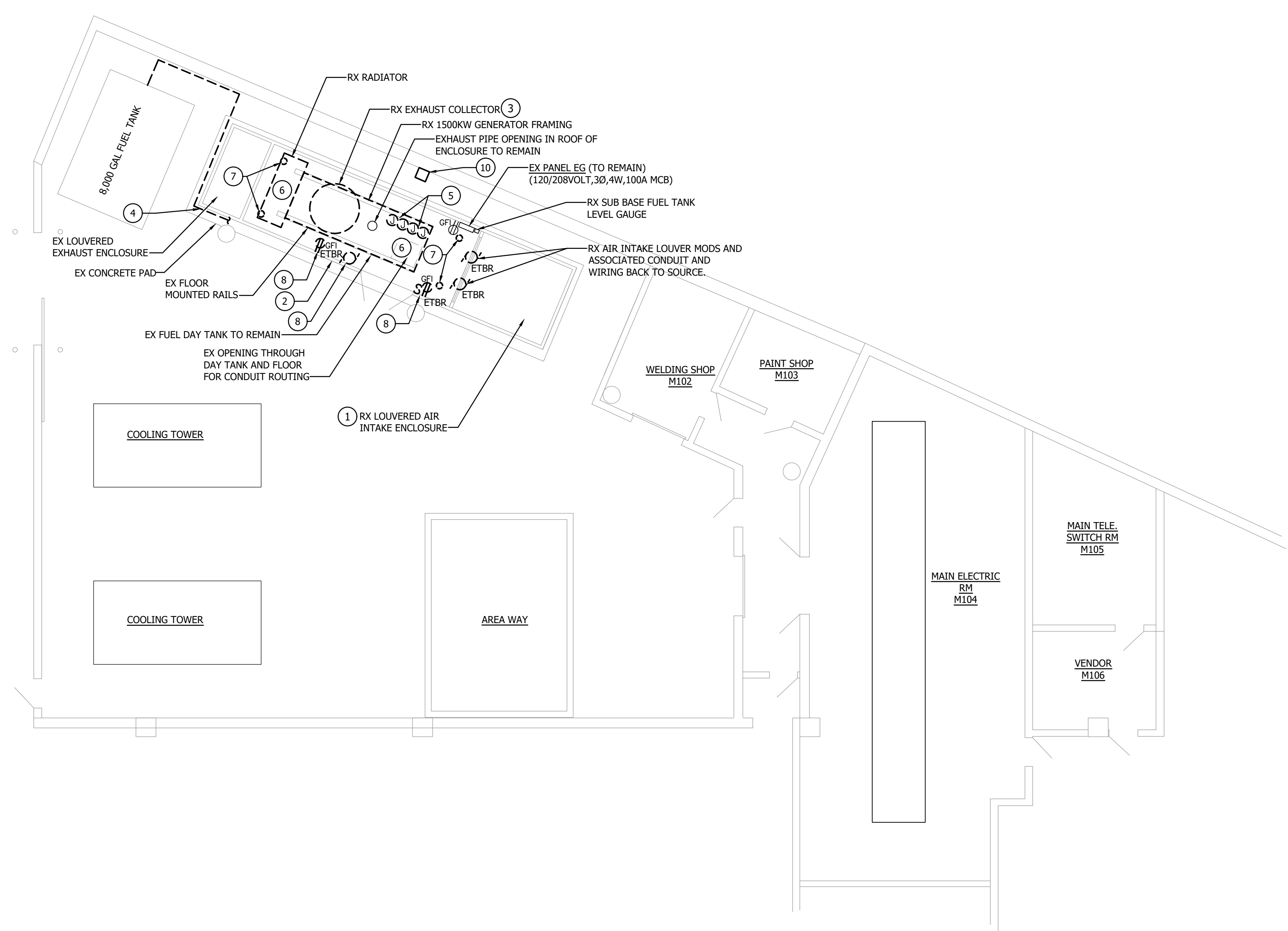
ELECTRICAL ABBREVIATIONS			
A	AMPERE	KW	KILOWATT
AFF	ABOVE FINISHED FLOOR	M.H.	MOUNTING HEIGHT
AFG	ABOVE FINISHED GRADE	MTD	MOUNTED
AHU	AIR HANDLING UNIT	NFSS	NON-FUSED SAFETY SWITCH
C	CONDUIT	P	POLE
DWG	DRAWING	PNL	PANEL
EF	EXHAUST FAN	RGS	RIGID GALVANIZED STEEL
ENCL	ENCLOSURE	RX	REMOVE EXISTING
EX	EXISTING	TYP	TYPICAL
FSS	FUSED SAFETY SWITCH	UH	UNIT HEATER
GND	GROUND	V	VOLTS
HOA	HAND-OFF-AUTOMATIC (SWITCH)	VRF	VARIABLE REFRIGERANT FLOW
HP	HORSEPOWER	W	WIRE
		WP	WEATHERPROOF

	PROFESSIONAL CERTIFICATION		AS-BUILT / REVISION	BY	DATE	P.W.A. NO.	KEY SHEET	POSITION SHI	DRAWING SCALE	PROPERTY MANAGEMENT	
	I HEREBY CERTIFY THAT THESE DOCUMENTS WERE PREPARED OR APPROVED BY ME, AND THAT I AM A DULY LICENSED PROFESSIONAL ENGINEER UNDER THE LAWS OF THE STATE OF MARYLAND.						QNW		PLAN SCALE: AS SHOWN	APPROVED BY: _____	
	LICENSE NO. 51827, EXPIRATION DATE 12/06/26		CONTRACT COMPLETION BOX						PROFILE SCALE: _____	DATE: _____	PROPERTY MANAGER
	ENGINEER: Dalton J. Twardus	DGN BY: _____	BUREAU OF ENGINEERING AND CONSTRUCTION	TRAFFIC	HIGHWAYS	STRUCTURES	STORM DRAINS	SEWER	WATER	FIELD ENGINEER	
AS-BUILT PER RECORD PRINT	DWN BY: _____	REVIEWED BY: _____									
BY: _____	CHKD BY: _____	DATE REVIEWED: _____									
DATE: 01/29/2026	DATE: _____										

BALTIMORE COUNTY OFFICE OF BUDGET AND FINANCE – PROPERTY MANAGEMENT	
BCDC BOSLEY GENERATOR REPLACEMENT	
ELECTRICAL COVERSHEET	
Replacement of 1.5 MW Generator	
SUBDIVISION: TOWSON	720 BOSLEY AVENUE, TOWSON, MD 21204
ELECTION DIST. NO. 15C7	

SHEET DESIGNATION	CONTRACT NUMBER
E-001	DPW#25215 PO0
	JOB ORDER NUMBER
	10001234
	SHEET 2 OF 4
	DRAWING NUMBER
	2026-0083
	FILE NO.: 8

DWG. FILENAME:



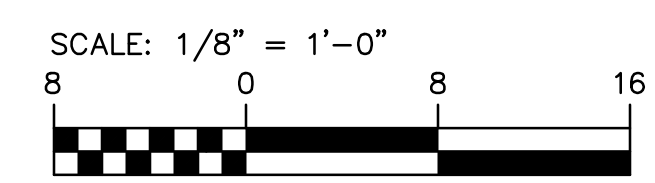
GENERAL NOTES

1. DURING REMOVAL OF EXISTING GENERATOR CONTRACTOR SHALL RETAIN ALL EXISTING CONDUIT AND WIRING FOR GENERATOR OUTPUT BREAKER TO ATS AND ATS ENGINE START CONTROL WIRING TO EXTENT POSSIBLE FOR RECONNECTION TO NEW GENERATOR.
2. THE EXISTING WEATHERPROOF ENCLOSURE SHALL REMAIN AND BE MODIFIED TO ACCOMMODATE THE NEW GENERATOR AS NOTED ON NEW WORK PLANS.
3. PROVIDE TEMPORARY GENERATOR OF SAME SIZE AS EXISTING UNTIL NEW PERMANENT GENERATOR HAS BEEN INSTALLED AND TESTED. REMOVE ALL TEMPORARY POWER INSTALLATIONS AND CONNECTIONS AFTER PERMANENT GENERATOR IS ESTABLISHED AND PRIOR TO COMPLETION OF PROJECT.

DRAWING NOTES

1. CONTRACTOR SHALL DISCONNECT AND REMOVE EXISTING AIR INTAKE ENCLOSURE INCLUDING MOTOR OPERATED DAMPERS AND LOUVERED WALL. STORE IN A SECURED LOCATION FOR REINSTALLATION UPON COMPLETION OF EXISTING GENERATOR REMOVAL AND INSTALLATION OF NEW UNIT.
2. CONTRACTOR SHALL DISCONNECT AND REMOVE EXISTING FRONT WALL OF EXISTING GENERATOR ENCLOSURE. STORE IN A SECURED LOCATION FOR REINSTALLATION UPON COMPLETION OF EXISTING GENERATOR REMOVAL AND INSTALLATION OF NEW UNIT.
3. DISCONNECT EXISTING GENERATOR EXHAUST FROM OVERHEAD EXHAUST COLLECTOR. REMOVE EXISTING EXHAUST COLLECTOR AND PIPING AS NEEDED FROM EXISTING GENERATOR ENCLOSURE TO ALLOW FOR REMOVAL OF EXISTING GENERATOR UNIT AND PROTECTION OF EQUIPMENT BEING REUSED. RETAIN FOR REINSTALLATION AND STORE IN A SECURED AREA. EXISTING EXHAUST PIPING SHALL REMAIN FOR RECONNECTION TO NEW UNIT.
4. RX FUEL PIPING BACK FROM TANK TO GENERATOR GENERATOR. RX ASSOCIATED PIPING SUPPORTS, VALVES, GAUGES, ETC. RX FUEL FILL STATION AND ASSOCIATED PIPING FOR REPLACEMENT. REFER TO NEW WORK PLAN FOR ADDITIONAL INFORMATION.
5. DISCONNECT EXISTING BATTERY CHARGER CIRCUITS AND BLOCK HEATER CIRCUIT CONNECTIONS IN THEIR ENTIRETY INCLUDING ASSOCIATED CONDUIT AND WIRING BACK TO SOURCE PANEL EG.
6. DISCONNECT EXISTING 3P-2500A OUTPUT SERVICE DISCONNECT. DISCONNECT AND REMOVE EXISTING CONDUITS AND SERVICE FEEDERS FROM OUTPUT CIRCUIT BREAKER. REMOVE CONDUITS DOWN THROUGH DAY TANK AND DOWN TO CONCRETE PAD. EXISTING SERVICE CONDUCTORS TO REMAIN FOR RECONNECTION OF NEW UNIT. DISMANTLE AND REMOVE EXISTING GENERATOR CONTROL PANEL, ALTERNATOR AND ENGINE FROM EXISTING BASE MOUNTED DAY TANK. RX RADIATOR DISCHARGE DUCTWORK. DRAIN AND DISMANTLE EXISTING GENERATOR RADIATOR SECTION. ALL EXISTING CONNECTIONS INCLUDING WIRING AND CONDUIT TO EXISTING ATS AND ATS CONTROLS SHALL REMAIN.
7. RX LIGHTING FIXTURES. EXISTING CONDUIT AND WIRING BACK TO PANEL TO REMAIN.
8. RX RECEPTACLE AND LIGHT SWITCH. RX ASSOCIATED CONDUIT AND WIRING AS REQUIRED FOR REMOVAL OF EXISTING ENCLOSURE WALLS TO PROVIDE SPACE FOR REMOVAL OF EXISTING GENERATOR.
9. RX FUEL SYSTEM EQUIPMENT AND PUMP FROM FRONT WALL. RX ASSOCIATED CONDUIT AND WIRING AS REQUIRED FOR REMOVAL OF EXISTING ENCLOSURE WALLS TO ALLOW FOR REMOVAL OF EXISTING GENERATOR. EX EQUIPMENT SHALL BE RETAINED FOR REINSTALLATION.
10. RX BATTERY CHARGING UNIT INCLUDING ASSOCIATED CONDUIT AND WIRING BACK TO PANEL EG.

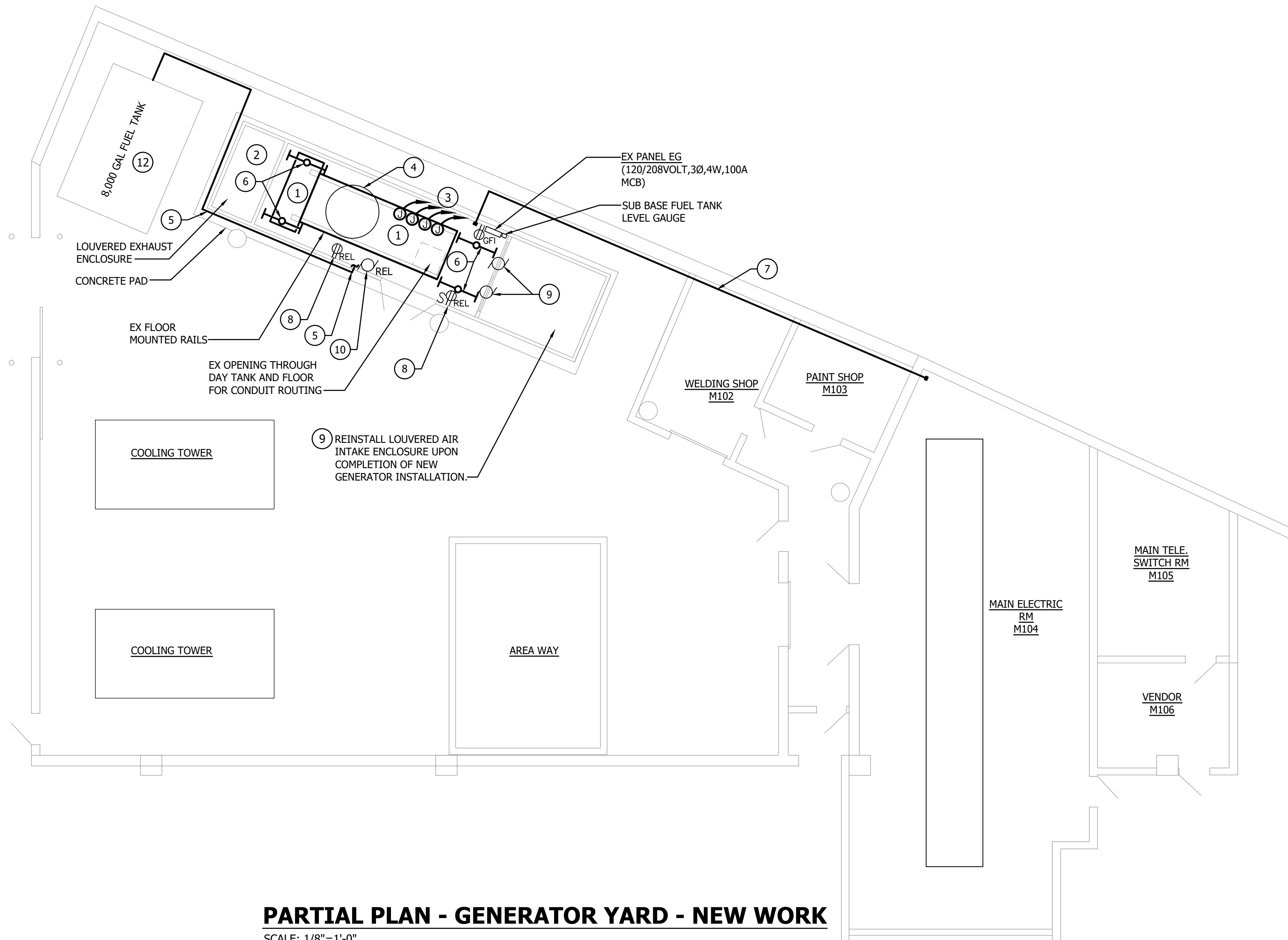
PARTIAL PLAN - GENERATOR YARD - DEMOLITION
SCALE: 1/8"=1'-0"



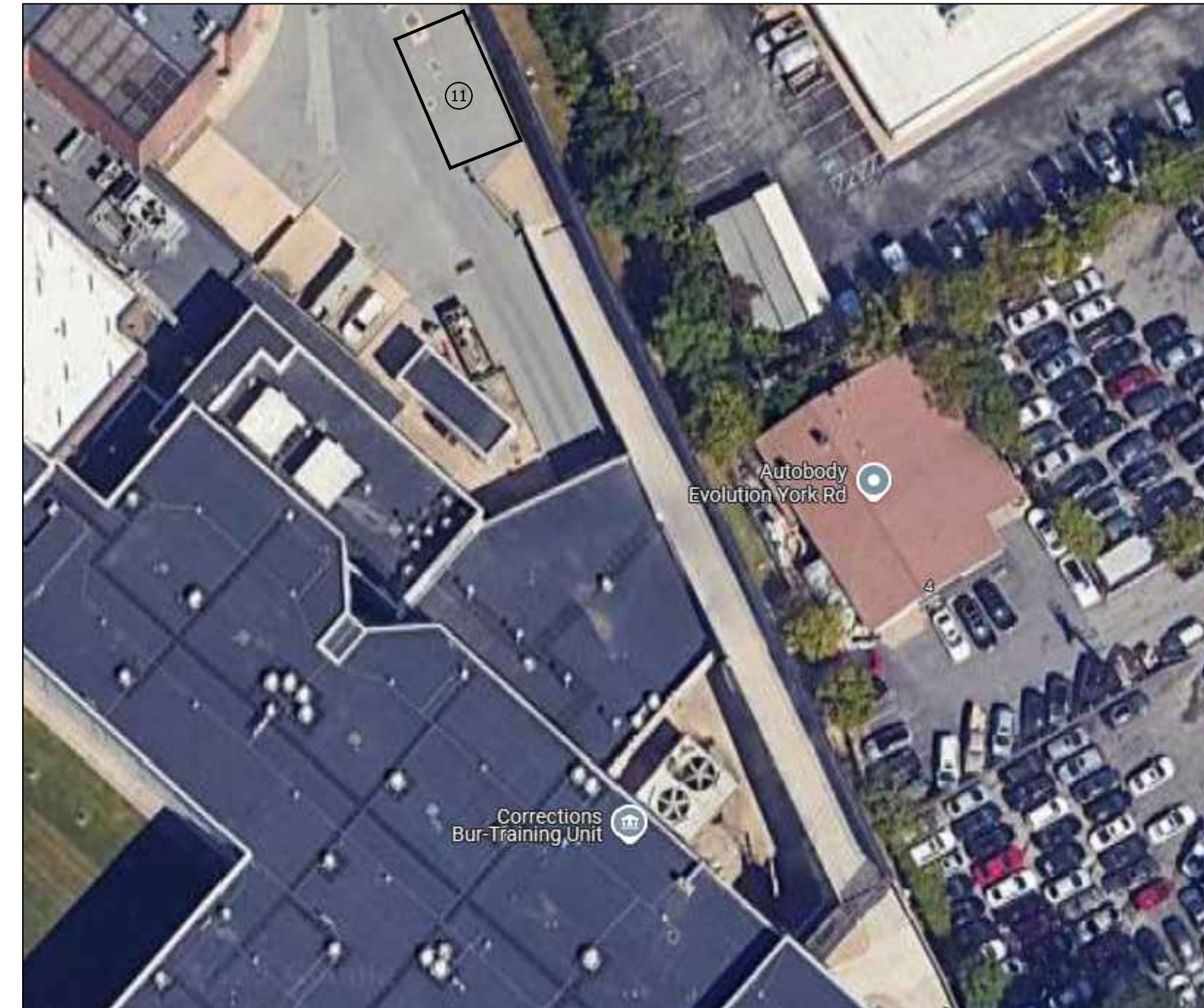
	PROFESSIONAL CERTIFICATION		AS-BUILT / REVISION	BY	DATE	P.W.A. NO.	KEY SHEET	POSITION	SHT	DRAWING SCALE	PROPERTY MANAGEMENT
	I HEREBY CERTIFY THAT THESE DOCUMENTS WERE PREPARED OR APPROVED BY ME, AND THAT I AM A DULY LICENSED PROFESSIONAL ENGINEER UNDER THE LAWS OF THE STATE OF MARYLAND.					R.O.W. NO.	QNW			PLAN SCALE: AS SHOWN	APPROVED BY: _____
	LICENSE NO. 51627 EXPIRATION DATE 12/06/26		CONTRACT COMPLETION BOX							PROFILE SCALE: _____	DATE: _____
	ENGINEER: Dalton J. Twardus	DGN BY: _____	BUREAU OF ENGINEERING AND CONSTRUCTION	TRAFFIC	HIGHWAYS	STRUCTURES	STORM DRAINS	SEWER	WATER	FIELD ENGINEER	
AS-BUILT PER RECORD PRINT	DWN BY: _____	REVIEWED BY: _____									
BY: _____	DATE: _____	CHKD BY: _____	DATE REVIEWED: _____								

BALTIMORE COUNTY OFFICE OF BUDGET AND FINANCE – PROPERTY MANAGEMENT		SHEET DESIGNATION	CONTRACT NUMBER
BCDC BOSLEY GENERATOR REPLACEMENT		E-101	DPW#25215 PO0
PARTIAL PLAN – ELECTRICAL – DEMOLITION		JOB ORDER NUMBER	
Replacement of 1.5 MW Generator		10001234	
SUBDIVISION: TOWSON		SHEET 3 OF 4	
720 BOSLEY AVENUE, TOWSON, MD 21204		DRAWING NUMBER	
ELECTION DIST. NO. 15C7		2026-0084	
		FILE NO.: 8	

DWG. FILENAME:



PARTIAL PLAN - GENERATOR YARD - NEW WORK
SCALE: 1/8"=1'-0"



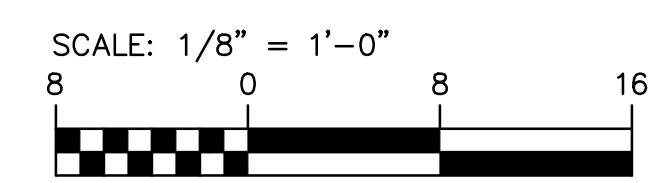
PARTIAL AERIAL VIEW - TEMPORARY REMOTE GENERATOR LOCATION - NEW WORK
NO SCALE

DRAWING NOTES

- 1 PROVIDE NEW IN KIND DIESEL FUELED 1.5 MW GENERATOR IN EXISTING WEATHERPROOF ENCLOSURE WITH A SINGLE 2500A OUTPUT BREAKER, BATTERY CHARGER AND JACKET HEATER. RECONNECT EXISTING SERVICE FEEDER CONDUITS AND CONDUCTORS TO NEW OUTPUT BREAKER. RECONNECT ALL EXISTING GENERATOR CONTROL WIRING. INSTALLATION OF NEW GENERATOR SHALL ACCOMMODATE ALL NEC REQUIRED CLEARANCES OF NEW GENERATOR AND ALL EXISTING/NEW WALL MOUNTED EQUIPMENT. ADJUST EXISTING STEEL RAILS ON EXISTING DAY TANK TO MATCH NEW GENERATOR MOUNTING RAILS. PROVIDE ALL ADDITIONAL CONDUIT AND WIRING AS REQUIRED FOR RECONNECTION. MATCH EXISTING SERVICE CONDUCTORS AND CONDUITS. COORDINATE INSTALLATION WITH MANUFACTURER'S REQUIREMENTS.
- 2 REINSTALL, CAULK/SEAL EXISTING INTAKE AND EXHAUST LOUVERS THAT WERE REMOVED DURING DEMOLITION OF EXISTING GENERATOR. REPLACE/MODIFY EXISTING DUCTWORK AS REQUIRED FOR CONNECTION TO NEW GENERATOR RADIATOR DISCHARGE. COORDINATE WITH MANUFACTURER'S REQUIREMENTS TO ENSURE EXISTING LOUVER OPENING SIZE IS ADEQUATE, MODIFY AS NECESSARY.
- 3 PROVIDE NEW BRANCH CIRCUITRY TO NEW BATTERY CHARGERS AND JACKET HEATERS FROM EXISTING PANEL EG AS REQUIRED. CONNECT TO EXISTING 1P-20A BRANCH CIRCUIT BREAKERS PREVIOUSLY SERVING BATTERY CHARGERS VIA 2 #12 & 1 #12GND-3/4" CONDUIT. CONNECT TO EXISTING 2P-30A BRANCH CIRCUIT BREAKERS PREVIOUSLY SERVING BLOCK HEATERS VIA 2 #10 & 1 #10GND-3/4" CONDUIT. PROVIDE/EXTEND CONDUIT AND WIRING AS REQUIRED FOR RECONNECTION TO PANEL.
- 4 REINSTALL EXISTING EXHAUST COLLECTOR AND ANY REMOVED PIPING ABOVE UNIT. REUSE EXISTING BRACKETS PREVIOUSLY USED TO MOUNT TO CEILING OF GENERATOR ENCLOSURE. RECONNECT REINSTALLED EXHAUST COLLECTOR TO EXISTING EXHAUST PIPING. PROVIDE NEW FLEX PIPING FROM GENERATOR EXHAUST PIPING UP TO EXHAUST COLLECTOR. COORDINATE ALL CONNECTIONS, PIPE SIZES, LOCATIONS, ETC WITH MANUFACTURER'S REQUIREMENTS.
- 5 PROVIDE/EXTEND EXISTING DIESEL FUEL PIPING ALONG FRONT WALL OF ENCLOSURE AND RECONNECT TO EXISTING SUB BASE DAY TANK. REINSTALL/PROVIDE ALL PIPING SUPPORTS, BRACKETS, VALVING, ETC. AS REQUIRED. COORDINATE EXACT PIPING SIZES WITH EXISTING. PROVIDE/EXTEND NEW FUEL LINE CONNECTING TO NEW GENERATOR. COORDINATE ALL CONNECTIONS WITH GENERATOR MANUFACTURER.
- 6 PROVIDE (4) WEATHERPROOF ENCLOSED AND GASKETED 48" LED LIGHTING FIXTURE. (LITHONIA LIGHTING CAT # FEML-48-6000LM -IMAF- WD-MVOLT-GZ10-40K-80CR) SURFACE MOUNT TO CEILING AND RECONNECT TO EXISTING BRANCH CIRCUIT AND CONTROLS PREVIOUSLY SERVING LIGHTING WITHIN ENCLOSURE. COORDINATE EXACT MOUNTING LOCATIONS WITH EXISTING CIRCUITRY REMAINING.
- 7 PROVIDE 2" EMPTY RGS FROM GENERATOR ENCLOSURE TO MAIN ELECTRICAL ROOM AS SHOWN FOR FUTURE CONTROL WIRING. COORDINATE EXACT TERMINATION LOCATIONS IN FIELD WITH OWNER. ROUTE CONDUIT OVERHEAD AS REQUIRED.
- 8 UPON COMPLETION OF GENERATOR INSTALLATION AND WALL REINSTALLATION, REINSTALL EXISTING RECEPTACLES AND LIGHT SWITCH THAT WERE REMOVED FROM FRONT WALL. COORDINATE EXACT MOUNTING LOCATIONS IN FIELD. RECONNECT TO EXISTING BRANCH CIRCUITRY PREVIOUSLY SERVING RECEPTACLES VIA 2 #12 & 1 #12 GND-3/4" CONDUIT. COORDINATE INSTALLATION WITH EXISTING ENCLOSURE MANUFACTURER.
- 9 REINSTALL LOUVERED INTAKE SECTION OF EXISTING ENCLOSURE AND RECONNECT EXISTING MOD MOTORS CONTROLLING LOUVERS FOR AIR INTAKE. RECONNECT TO EXISTING POWER AND CONTROL CIRCUITS. COORDINATE INSTALLATION WITH EXISTING ENCLOSURE MANUFACTURER.
- 10 REINSTALL EXISTING FUEL EQUIPMENT AND PUMP THAT WAS REMOVED TO ALLOW FRONT WALL TO BE REMOVED. RECONNECT TO EXISTING RECEPTACLE BRANCH CIRCUIT VIA #12 WIRING IN 3/4" CONDUIT. COORDINATE EXACT LOCATION WITH GENERATOR MANUFACTURER.
- 11 PROPOSED TEMPORARY PORTABLE GENERATOR LOCATION AT BACK OF FACILITY IN SALLY PORT PARKING AND ACCESS ROAD. COORDINATE EXACT LOCATION OF PORTABLE GENERATOR WITH FACILITIES MANAGEMENT. ROUTE GENERATOR SERVICE CONDUCTORS ALONG OVERHEAD BRIDGE ROAD WALL AND DOWN TO MAIN ELECTRICAL ROOM.
- 12 REPLACE ALL FUEL PIPING INCLUDING ALL VALVES, GAUGES, ETC FROM TANK TO GENERATOR AND TANK TO REMOTE FILL STATION.

GENERAL NOTES

1. RECONNECT ALL GROUNDING WIRING, EQUIPMENT, ETC. AS REQUIRED TO PROVIDE A COMPLETE SYSTEM.
2. PROVIDE ALL DUCT, PIPING, CONDUIT AND WIRING AS REQUIRED FOR MODIFICATIONS TO NEW GENERATOR AND ALL CONNECTIONS TO NEW AND EXISTING EQUIPMENT/CONDITIONS FOR A COMPLETE AND OPERABLE SYSTEM.
3. CONTRACTOR SHALL PERFORM MEGGER TESTING ON EXISTING CONDUCTORS SERVING ATS FROM 1.5 MEGAWATT GENERATOR TO ASSES THE INTEGRITY AND CONTINUITY OF EXISTING FEEDERS INSULATION AND RESISTANCE. EXISTING FEEDERS NOTED ARE 7 SETS OF 4 #500KCMIL & 1 #350KCMIL GRD IN EXISTING CONDUITS. CONDUCTOR ROUTING DISTANCE IS APPROXIMATELY 110 LINEAR FEET FROM GENERATOR 2500 AMPERE CIRCUIT BREAKER TO EXISTING ATS LOCATED IN MAIN ELECTRICAL ROOM.



	PROFESSIONAL CERTIFICATION		AS-BUILT / REVISION	BY	DATE	P.W.A. NO.	KEY SHEET	POSITION	SHT	DRAWING SCALE	PROPERTY MANAGEMENT	
	I HEREBY CERTIFY THAT THESE DOCUMENTS WERE PREPARED OR APPROVED BY ME, AND THAT I AM A DULY LICENSED PROFESSIONAL ENGINEER UNDER THE LAWS OF THE STATE OF MARYLAND.					R.O.W. NO.	QNW			PLAN SCALE: AS SHOWN	APPROVED BY: _____	
	LICENSE NO. 51827, EXPIRATION DATE 12/06/26		CONTRACT COMPLETION BOX							PROFILE SCALE: _____	DATE: _____	PROPERTY MANAGER
	ENGINEER: Dalton J. Twardus	DGN BY: _____	BUREAU OF ENGINEERING AND CONSTRUCTION	TRAFFIC	HIGHWAYS	STRUCTURES	STORM DRAINS	SEWER	WATER	FIELD ENGINEER		
AS-BUILT PER RECORD PRINT	DWN BY: _____	REVIEWED BY: _____										
BY: _____	CHKD BY: _____	DATE REVIEWED: _____										
DATE: 01/29/2026												

BALTIMORE COUNTY OFFICE OF BUDGET AND FINANCE – PROPERTY MANAGEMENT
 BCDC BOSLEY GENERATOR REPLACEMENT
PARTIAL PLAN – ELECTRICAL – NEW WORK
 Replacement of 1.5 MW Generator
 SUBDIVISION: **TOWSON** 720 BOSLEY AVENUE, TOWSON, MD 21204 ELECTION DIST. NO. **15C7**

SHEET DESIGNATION	CONTRACT NUMBER
E-201	DPW#25215 PO0
JOB ORDER NUMBER	
10001234	
SHEET 4 OF 4	
DRAWING NUMBER	
2026-0085	
FILE NO.:	8

DWG. FILENAME: